

## Type ALP-01 Series Load Pin



### Features:



- Range: 2t...100t
- Hollow section round shaft
- Compact structure, easy installation
- Strong anti-torsion and anti-bending ability
- Good long-term stability
- Alloy steel material, nickel-plated surface
- Protection level IP66/68

### Applications

- Ropes, shackles, bearing seats
- Other special scales

### Description

• **ALP-1** is a pin-type sensor. Range from 2t to 100t. Alloy steel material, nickel-plated surface. The structure adopts a hollow section round shaft, which has strong anti-torsion and anti-bending ability. Compact structure, easy installation, can also be customized according to customer needs. Suitable for ropes, shackles, bearing seats and other scales

## Type ALP-1 Series Load Pin

### Technical Specifications ALP-1

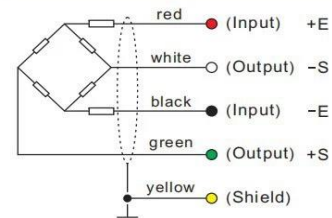
|                                       |                               |            |
|---------------------------------------|-------------------------------|------------|
| Rated load                            | 2,3,5,7,10,15,20,30,40,50,100 | t          |
| Rated output                          | 1.5                           | mV/V       |
| Zero balance                          | ±2                            | %R.O.      |
| Comprehensive error                   | ±0.5                          | %R.O.      |
| Creep (30 minutes)                    | ±0.2                          | %R.O.      |
| Repeatability                         | ±0.2                          | %R.O.      |
| Normal operating temperature range    | -10~+40                       | °C         |
| Allowable operating temperature range | -20~+70                       | °C         |
| Effect of temperature on sensitivity  | ±0.1                          | %R.O./10°C |
| Effect of temperature on zero point   | ±0.1                          | %R.O./10°C |
| Recommended excitation voltage        | 5-12                          | VDC        |
| Input impedance                       | 770±10                        | Ω          |
| Output impedance                      | 700±5                         | Ω          |
| Insulation impedance                  | ≥5000 (50VDC)                 | MΩ         |
| Safe overload                         | 150                           | %R.C.      |
| Ultimate overload                     | 300                           | %R.C.      |
| Elastic element material              | alloy steel /stainless steel  |            |
| Protection level                      | IP67/IP68                     |            |
| Cable length                          | 3                             | m          |

### Wiring

#### Features:

- Shielded, 4 conductor cable.
- Cable diameter: Ø5.3mm.
- Standard cable length for 2t – 100t 3m
- Shield connected to element.
- Cable jacket in PVC.

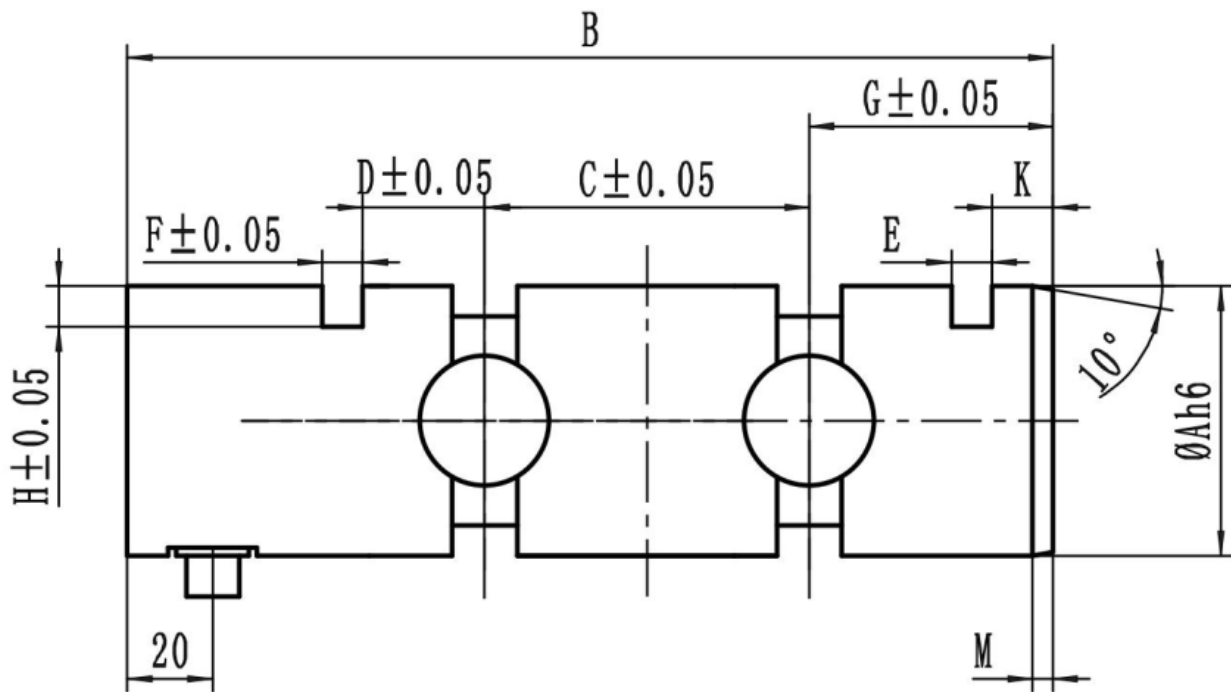
#### Mode of Connection



## Type ALP-1 Series Load Pin

Dimensions in mm

| Product Size Fig |    |
|------------------|----|
| Unit:            | mm |



| Range (T)   | A   | B   | C   | D  | E   | F   | G  | H  | K  | M |
|-------------|-----|-----|-----|----|-----|-----|----|----|----|---|
| 2, 3, 5     | 50  | 180 | 66  | 27 | 4.5 | 6.5 | 32 | 7  | 9  | 3 |
| 7, 10       | 60  | 190 | 96  | 14 | 10  | 9   | 33 | 9  | 9  | 5 |
| 10, 15      | 65  | 210 | 116 | 14 | 10  | 9   | 32 | 9  | 8  | 5 |
| 20, 30      | 80  | 225 | 109 | 20 | 12  | 11  | 40 | 10 | 8  | 6 |
| 40, 50, 100 | 120 | 275 | 153 | 25 | 14  | 13  | 51 | 15 | 12 | 6 |