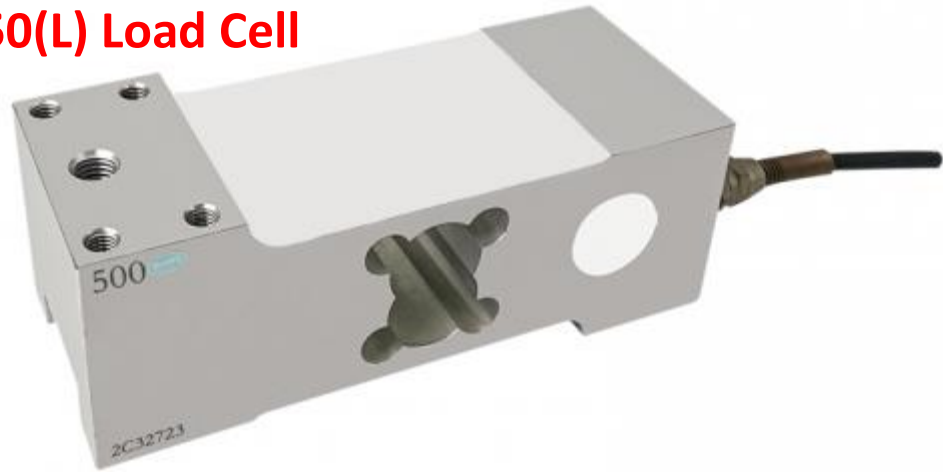


## Type AM-1250(L) Load Cell



### Short Description

- Aluminium-alloy IP67 single point load cell
- Colorless anodized
- Suitable for pricing scales, bench scales, etc.
- Maximum platform size: 1000 x 1000 mm
- A 1000 Ohm type available (R1) but is excluded from OIML



Test certificate no. TC7868 Revision 1

C of C no R60/2000-NL1-12.52



Certificate no. 11-090

### Available Models

| P/N        | Capacity | Accuracy | Full Article Description |
|------------|----------|----------|--------------------------|
| 7220999123 | 100kg    | C3       | AM-1250(L)-C3-100kg-3G   |
| 7220999124 | 200kg    | C3       | AM-1250(L)-C3-200kg-3G   |
| 7220879125 | 300kg    | C3       | AM-1250(L)-C3-300kg-3G   |
| 7220879126 | 500kg    | C3       | AM-1250(L)-C3-500kg-3G   |
| 7220879127 | 635kg    | C3       | AM-1250(L)-C3-635kg-3G   |
| 7220879128 | 1000kg   | C3       | AM-1250(L)-C3-1000kg-3G  |

## Type AM-1250(L) Load Cell

### Technical Specifications AM-1250(L)

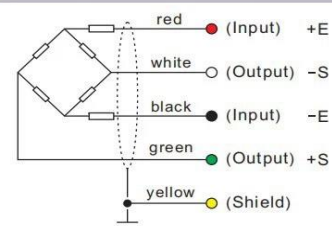
|  |                         |                              |
|--|-------------------------|------------------------------|
| Accuracy Class                         |                         | OIML R60 C3                  |
| Output Sensitivity ( = FS )            | mV/V                    | 2.0 ± 0.2                    |
| Maximum Capacity ( Emax )              | kg                      | 100, 200, 300, 500, 635,1000 |
| Max. Number of Load Cell Intervals     | nLc                     | 3000                         |
| Ratio of min. LC Verification Interval | $Y = E_{max} / v_{min}$ | 10000                        |
| Combined Error                         | %FS                     | ≤± 0.0230                    |
| Minimum dead load                      | Of Emax                 | 0%                           |
| Safe overload                          | of Emax                 | 150 %                        |
| Ultimate overload                      | of Emax                 | 300 %                        |
| Zero balance                           | of FS                   | < ± 2.0 %                    |
| Excitation, recommended voltage        | V                       | 5 ~ 12                       |
| Excitation maximum                     | V                       | 18                           |
| Input resistance                       | Ω                       | 405 ± 6                      |
| Output resistance                      | Ω                       | 350 ± 3.5                    |
| Insulation resistance                  | MΩ                      | ≥5000 ( at 50VDC )           |
| Compensated temperature                | °C                      | -10 ~+40                     |
| Operating temperature                  | °C                      | -35 ~ +65                    |
| Storage temperature                    | °C                      | -40 ~ +70                    |
| Element material                       |                         | Aluminium                    |
| Ingress Protection (acc. to EN 60529)  |                         | IP65                         |
| Recommended torque on fixation bolts   | Nm                      | M8:10                        |

### Wiring

Features:

Shielded, 4 conductor cable.  
 Cable diameter: Ø5.3mm.  
 Standard cable length: 3m.  
 Shield connected to element.  
 Cable jacket in PVC.

#### Mode of Connection



## Type AM-1250(L) Load Cell

Dimensions in mm

