

Type CLA Load Cell

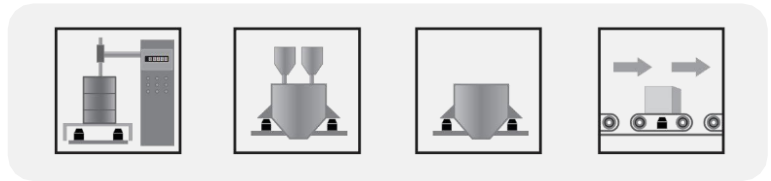
Special features

- Stainless steel construction
- Max. capacities from 7.5t to 22.5t
- Complies with OIML R60 regulations up to 3000d divisions
- Hermetically sealed (IP68; IP69K)
- Stainless steel cable connector(Glass-to-Metal seal)
- Self-restoring function
- Applications: Truck scale and Industrial batching control system

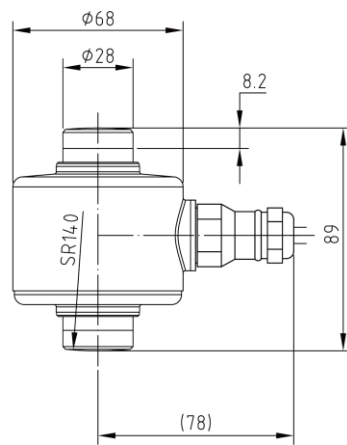
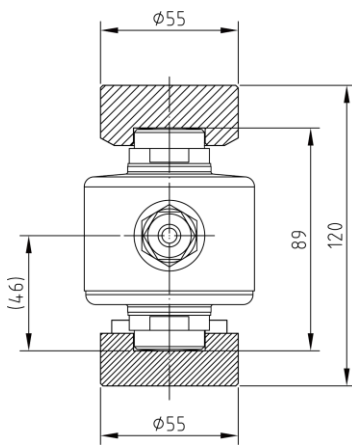


Option

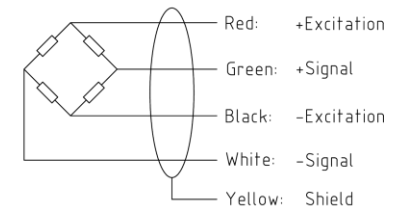
- Exterior braided armor covered cable; 7mm O.D.
- Explosion-proof versions



Dimensions



Cable Colour Code: (4-wire circuit)



Shield connected to load cell body

Type CLA Load Cell

Parameter		Units	Specifications
Model No.			CLA
Rated capacity (E_{max})		t	7.5 / 15 / 22.5
Accuracy class ¹⁾²⁾			0.04% C3
Min. dead load		kg	0
Rated output		mV/V	2.0 ± 0.002
Zero balance		% of E_{max}	± 1
Y-value			6000 10000
Repeatability error		% of AL ³⁾	$< \pm 0.020$ $< \pm 0.010$
Creep; 30 minute		% of AL	$< \pm 0.030$ $< \pm 0.017$
Min. dead load output return (DR); 30 min		% of AL	$< \pm 0.030$ $< \pm 0.017$
Temp. effect on	Min. dead load output	% of $E_{max}/^{\circ}C$	$< \pm 0.023$ $< \pm 0.014$
	Rated output ²⁾	% of AL/ $^{\circ}C$	$< \pm 0.020$ $< \pm 0.012$
Temperature range	Compensated	$^{\circ}C (^{\circ}F)$	- 10 to + 40 [+ 14 to +104]
	Operating		- 40 to + 65 [- 40 to +149]
	Safe storage		- 40 to + 80 [- 40 to +176]
Excitation voltage	Recommended	V AC/DC	5 ~ 15
	Maximum		15
Terminal resistance	Excitation	Ω	1100 ± 15
	Output		1000 ± 3
Insulation resistance @50VDC		M Ω	> 5000
Breakdown voltage		V AC	> 500
Seal type / IP rating			Hermetically welded / IP68 69k
Load limit	Safe	% of E_{max}	150
	Ultimate		300
Material	Spring element		Stainless steel
	Enclosure		304 stainless steel, laser welded
	Anti-Rotation		Integral; Parallel dual-plane
	Connectors		Glass-to-Metal seal
	Strain gauge		PEEK-1000
	Cable construction		Fireretardant PVC; PVC chemically resistant jacket, 6.5mm O.D.; 4 Conductors shielded wires; AWG24
Cable length		m	12.0
Weight; approx		kg	1.8
Fatigue life		cycles @ E_{max}	> 1,000,000
Deflection at E_{max} ; approx		mm	< 0.5
Barometric pressure effect on Zero Output		Vmin/kPa	< 1.0

Notes:

- 1) Error due to the combined effect of non-linearity and hysteresis
- 2) The sum of errors due to Temperature Effect on Output comply with the requirements of OIML R60 and NIST HB44
- 3) AL= Applied Load