

Type GL Load Cell



Features

- Range: 0.5t...100t
- Low profile, easy to install
- Can only measure pressure
- High overall accuracy, good long-term stability
- Alloy steel material, nickel-plated surface
- Stainless steel material optional
- Protection level IP68/68



Test certificate no. TC7868 Revision 1

C of C no R60/2000-NL1-12.52

Certificate no. 06-099A1



Application

- Weighing of hoppers, tanks and silos
- Applicable to force control and measurement

Available Models

| P/N | Capacity | Accuracy | Full Article Description |
|-----------------|----------|-----------------------|--------------------------|
| 72209200-0001 | 500kg | C3 Excluded from OIML | GL-500-C3-3B |
| 72209201-0002 | 1t | C3 Excluded from OIML | GL-1000-C3-3B |
| 72209202-0003 | 2.5 | C3 Excluded from OIML | GL-2500-C3-3B |
| 72209203-0004 | 5t | C3 Excluded from OIML | GL-5000-C3-3B |
| 72209204-0005 | 10t | C3 Excluded from OIML | GL-10000-C3-3B |
| 72209205-0006 | 15t | C3 Excluded from OIML | GL-15000-C3-3B |
| 72209206-0007 | 20t | C3 Excluded from OIML | GL-20000-C3-3B |
| 72209207-0008 | 25t | C3 Excluded from OIML | GL-25000-C3-3B |
| 72209208-0009 | 30t | C3 Excluded from OIML | GL-30000-C3-3B |
| 72209209-00010 | 50t | C3 Excluded from OIML | GL-50000-C3-3B |
| 722092010-00011 | 100t | C3 Excluded from OIML | GL-100000-C3-3B |

Type GL Load Cell

Technical Specifications GL

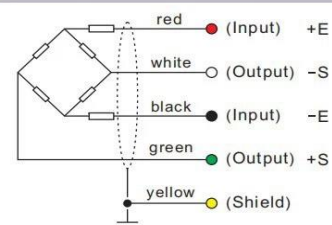
| | | |
|--|-----------------|--|
| Accuracy Class | | OIML R60 C3 |
| Output Sensitivity (= FS) | mV/V | 2.0 ± 0.2 |
| Maximum Capacity (Emax) | t | 0.5,1,2.5,5,10,15,20,25,30,50,100t |
| Max. Number of Load Cell Intervals | nLc | 3000 |
| Ratio of min. LC Verification Interval | Y = Emax / vmin | 10000 |
| Combined Error | %FS | ≤± 0.020 |
| Minimum dead load | Of Emax | 0% |
| Safe overload | of Emax | 150 % |
| Ultimate overload | of Emax | 300 % |
| Zero balance | of FS | < ± 2.0 % |
| Excitation, recommended voltage | V | 5 ~ 12 |
| Excitation maximum | V | 18 |
| Input resistance | Ω | 776 ± 10 |
| Output resistance | Ω | 700 ± 3 |
| Insulation resistance | MΩ | ≥5000 (at 50VDC) |
| Compensated temperature | °C | -10 ~ +40 |
| Operating temperature | °C | -35 ~ +65 |
| Storage temperature | °C | -40 ~ +70 |
| Element material | | Stainless steel |
| Ingress Protection (acc. to EN 60529) | | IP68/ IP69 |
| Recommended torque on fixation bolts | Nm | M6,M8:25 M10: 50 M12:75 M20:450 M33:750 M42:1450 |
| ATEX classification (optional) | | II1G Ex ia II1C T4 II1D Ex iaD 20 T73°C II3G nL IIC T4 |

Wiring

Features:

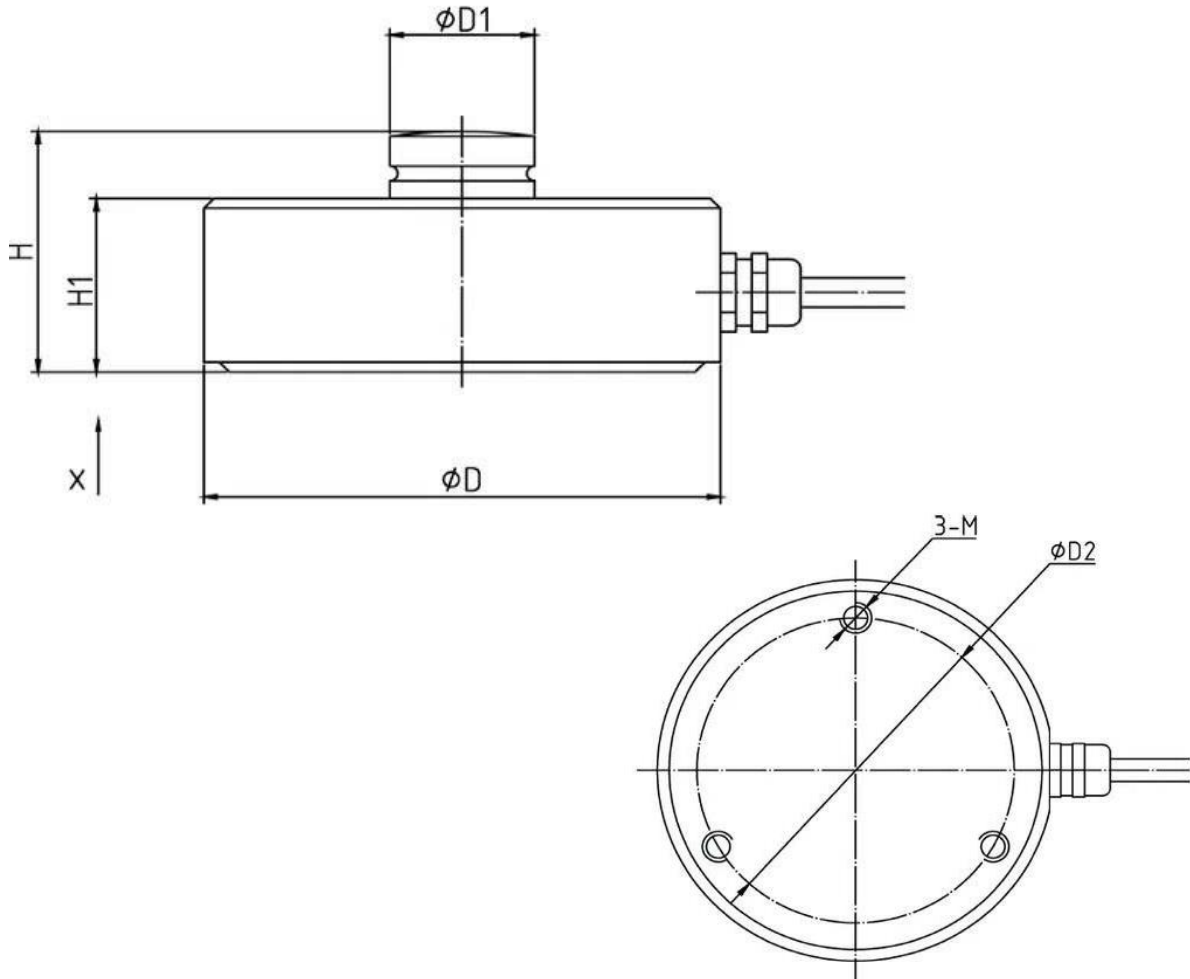
- Shielded, 4 conductor cable.
- Cable diameter: Ø5.3mm.
- Standard cable length for 100kg-5t: 5m 10t-30t:10m 50t:15m
- Shield connected to element.
- Cable jacket in PVC.

Mode of Connection



Type GL Load Cell

Dimensions in mm



| Rated Cap | ϕD | $\phi D1$ | $\phi D2$ | H | H1 | M |
|------------|----------|-----------|-----------|------|----|---------|
| t/mm | | | | | | |
| 0.5t - 10t | 82 | 22 | 65 | 44 | 32 | M6*1.0 |
| 15t - 30t | 100 | 28 | 80 | 48.5 | 35 | M8*1.25 |
| 50t | 126 | 35 | 96 | 54 | 40 | M8*1.25 |
| 100t | 165 | 60 | 125 | 80 | 60 | M10*1.5 |