

Type LFT-ZL Axial Tension Sensor



Short Description



- Nickel plated alloy steel IP67 shear beam load cell
- Adhesive sealed
- Suitable platform weighing, bed weighing, etc.
- High accuracy
- High reliability
- Current calibrated (sc-option)



Test certificate no. TC7868 Revision 1

C of C no R60/2000-NL1-12.52



Certificate no. 06-199A1

Features:

- High stability
- Different specifications of pulleys can be installed
- easy to assemble
- Anti-interference signals are stable
- Quality stainless steel
- widely used in fiber, yarn, cable, tape, etc All kinds of wire production equipment. For the dynamic measurement of the tensio

Type LFT-ZL Axaxial Tension Sensor

Technical Specifications LFT-ZL

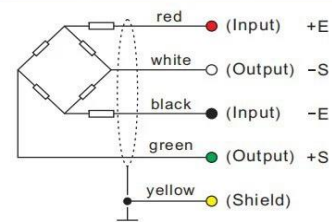
Rated quantitative schedule	N	50-12000
Output sensitivity	mV/V	2.0± 0.05
Zero point output	%F.S.	± 1
Non-linear	%F.S.	0.3
lag	%F.S.	0.3
Repeatability	%F.S.	0.1
Creep (30 min)	%F.S.	0.1
Temperature sensitivity drift	%F.S./10°C	0.002
Zero temperature drift	%F.S./10°C	0.002
Response frequency	Hz	1k
Material		42CrMoA
impedance	Ω	350
Insulation resistance	MΩ /100V DC	≥5000
Use voltage	V	5-15
Operating temperature range	°C	-20-60
Safety overload	%R.C.	150
Extreme overload	%R.C.	300
Cable line specifications	m	Φ 5*3m
Cable limit pull force	N	98
TEDS		selectable

Wiring

Features:

Shielded, 4 conductor cable.
 Cable diameter: Ø5.3mm.
 Standard cable length for 500kg – 3t 5m
 Shield connected to element.
 Cable jacket in PVC.

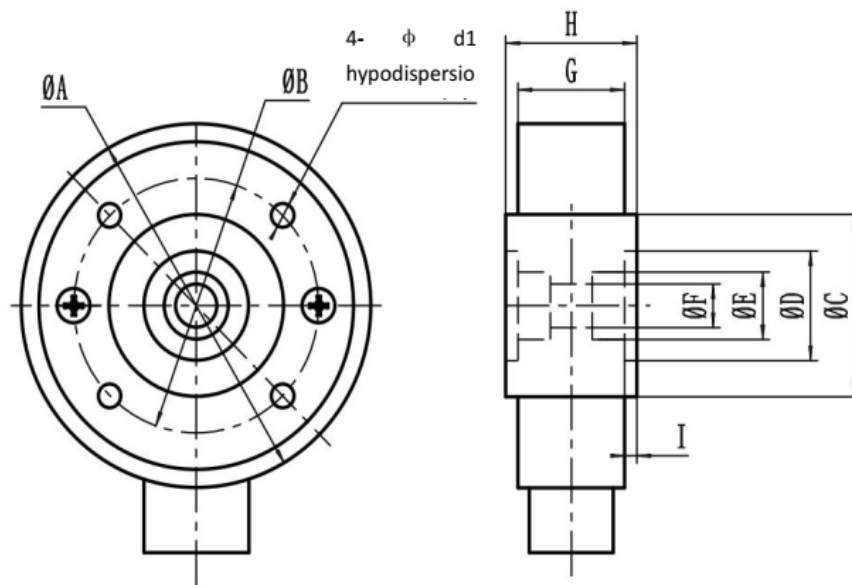
Mode of Connection



Type LFT-ZL Axial Tension Sensor

Dimensions in mm

Product Size Fig	
Unit:	mm



Range (N)	A	B	C	D	E	F	G	H	I	d1
50-150	93	64	45	26	16	9	30.5	37.5	3.5	5.5
50-500	100	70	50	30	18.5	12	30.5	37.5	3.5	6.6
150-1000	105	75	60	40	20	17	30.5	37.5	3.5	6.6
150-1500	125	95	70	45.5	33	20/25	40	48	4	7
375-3000	175	135	100	70	44/48	35/40	57	65	4	9
750-12000	225	175	130	80	64/70	50/60	66	76	4	11



force diagram

Install it via a flange disk

