


Type SB Load Cell



Short Description

- Nickel plated alloy steel IP67 shear beam load cell
- Suitable for truck-, track and hopper scales
- Suitable for hazardous locations.

 Test certificate no. D09-05.20
C of C no R60/2000-CN1-06.09

Available Models

P/N	Capacity	Accuracy	Full Article Description
72208600(0*)	300kg/500kg	C3	SB-C3-300kg/500kg-4B
72208601	1t	C3	SB-C3-1t-4B
72208602	2t	C3	SB-C3-2t-4B
72208603	2.5t	C3	SB-C3-2.5t-4B
72208604	3t	C3	SB-C3-3t-4B
72208605	5t	C3	SB-C3-5t-4B
72208606	7.5t	C3	SB-C3-7.5t-4B
72208607	10t	C3	SB-C3-10t-4B
72208608	15t	C3	SB-C3-15t-4B
72208609	20t	C3	SB-C3-20t-4B
72208610	30t	C3	SB-C3-30t-4B

Type SB Load Cell

Technical Specifications SB

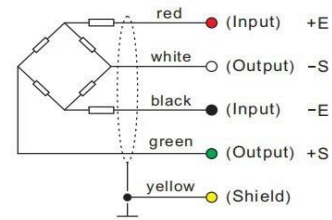
Accuracy Class		OIML R60 C3
Output Sensitivity (= FS)	mV/V	2.0 ± 0.2
Maximum Capacity (Emax)	kg	300,500,1t,2t,2.5t,3t,5t,7.5t,10t,15t,20t,30t
Max. Number of Load Cell Intervals	n/c	3000
Ratio of min. LC Verification Interval	Y = Emax / vmin	10000
Combined Error	%FS	≤± 0.023
Minimum dead load	Of Emax	0%
Safe overload	of Emax	150 %
Ultimate overload	of Emax	300 %
Zero balance	of FS	< ± 2.0 %
Excitation, recommended voltage	V	5 ~ 12
Excitation maximum	V	18
Input resistance	Ω	385 ± 20
Output resistance	Ω	350 ± 3.5
Insulation resistance	MΩ	≥5000 (at 50VDC)
Compensated temperature	°C	-10 ~ +40
Operating temperature	°C	-35 ~ +65
Storage temperature	°C	-40 ~ +80
Element material		Nickel plated alloy steel
Ingress Protection (acc. to EN 60529)		IP67
Recommended torque on fixation bolts	Nm	
ATEX classification (optional)		II1G Ex ia II1C T4 II1D Ex iaD 20 T73°C II3G nL IIC T4

Wiring

Features:

Shielded, 4 conductor cable.
Cable diameter: Ø6.2mm.
Standard cable length for 300kg – 3t 5m, 7.5t – 30t 12m,
Shield connected to element.
Cable jacket in PVC.

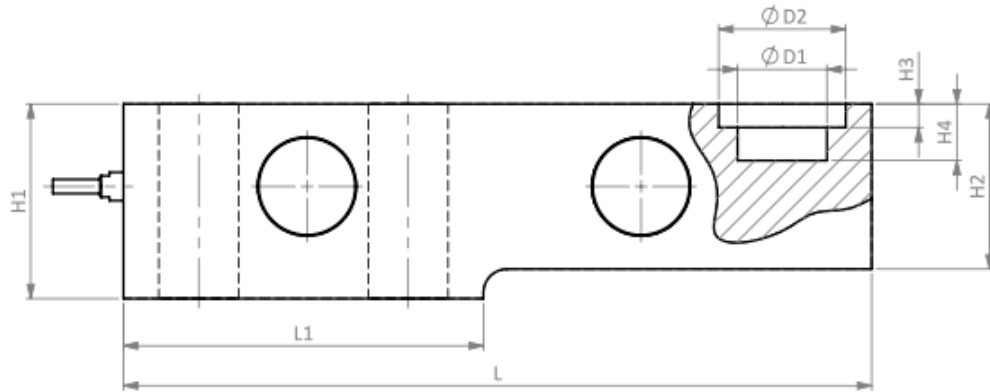
Mode of Connection



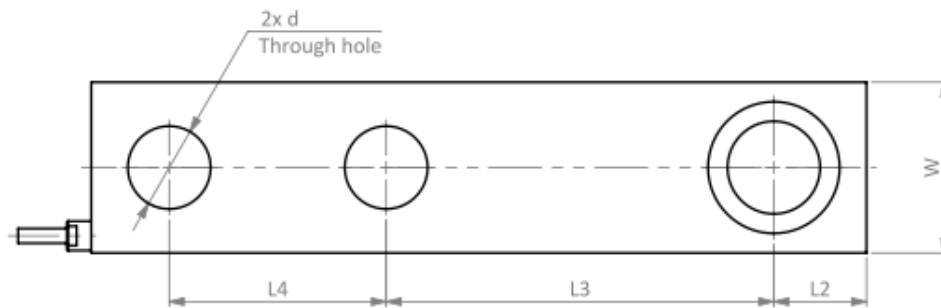
Type SB Load Cell

Dimensions in mm

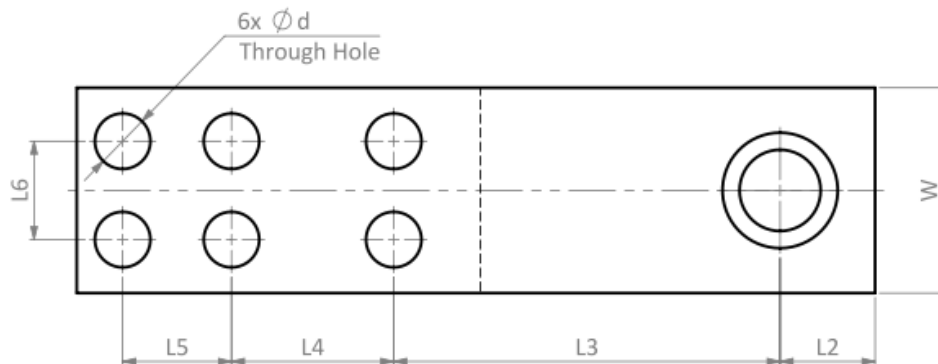
Front View



0.3kg-20t Top View



30t Top View



Dimension Capacity	H1	H2	H3	H4	ØD1	ØD2	Ød	W	L	L1	L2	L3	L4	L5	L6
0.3t-2t	43	37	12.5	30	16	32	13	37	203	95	22	98	64	-	-
2.5t	43	37	12.5	30	16	32	15	37	203	95	22	98	64	-	-
3t	43	37	12.5	25	16	32	15	37	203	95	22	98	64	-	-
5t	52	48	12.5	30	22	38	21	48	235	110	22	124	66	-	-
10t	67	60	8.5	20	32	48	28	60	279	133	32	140	82	-	-
15t	67	60	8.5	20	32	48	28	60	279	133	32	140	82	-	-
20t	82.5	70	10	24	38	54	34	70	318	153	38	159	89	-	-
30t	115	90	14	32	38	54	26	96	374	189	44.5	181	76	51	46

Type SB Load Cell

Available accessories

SPC -201-0.1-10t foot

HY-8-101-03-10t Load Button

- Easy installation
- Anti-corrosion
- Good self-alignment ability
- Mainly used for truck scales, platform scales and other electronic weighing devices

