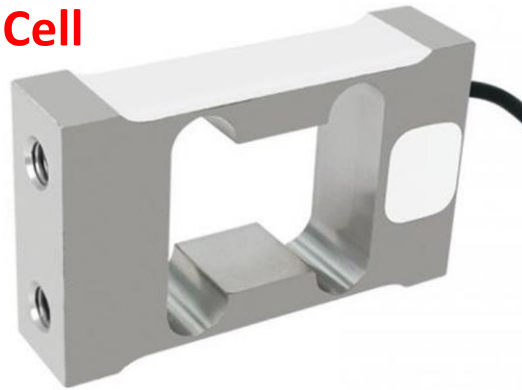


Type SPS-05 Load Cell



Short Description

- Weighing range: 4kg...30kg
- High overall accuracy, good long-term stability
- Simple structure, easy to install
- Recommended table size: 200*200mm
- Aluminum alloy material, anodized surface
- Corner deviation has been adjusted
- Optional -Explosion-proof model available

Available Models

- Retail Scales
- Pharmaceutical Scales
- Packaging Machines
- Sorting Scales
- Product Description

Available Models

P/N	Capacity	Accuracy	Full Article Description
27052512-1	4kg	0.02%	SPS-05-4000g-0.40B
27052512-2	5kg	0.02%	SPS-05-5000g-0.40B
27052512-3	8kg	0.02%	SPS-05-8000g-0.40B
27052512-4	10kg	0.02%	SPS-05-10000g-0.40B
27052512-4	20kg/30KG	0.02%	SPS-05-20000g-0.40B

Description

SPS-05 sensor is a low-range sensor designed for electronic scales and platform scales. Made of aluminum alloy, with anodized surface, it has good bending and torsion resistance and IP65 protection level. It is suitable for counting scales, packaging scales, and weighing in the food, medicine and other industries, especially for mass production operations.

Type SPS-05 Load Cell

Technical Specifications SPS-05

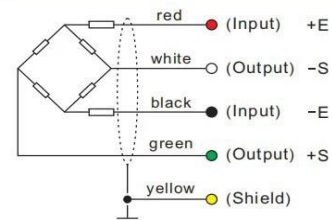
Specification	Value	Unit
Rated load	4, 5, 8, 10, 20, 30	kg
Rated output	1.8	mV/V
Zero balance	±1	%R.O.
Comprehensive Error	±0.02	%R.O.
Zero output	≤±5	%R.O.
Repeatability	≤±0.01	%R.O.
Creep (30 minutes)	≤±0.02	%R.O.
Normal operating temperature range	-10~+40	°C
Allowable operating temperature range	-20~+70	°C
Effect of temperature on sensitivity	±0.02	%R.O./10°C
Effect of temperature on zero point	±0.02	%R.O./10°C
Recommended excitation voltage	5-12	VDC
Input impedance	410±10	Ω
Output impedance	350±5	Ω
Insulation Resistance	≥3000 (50VDC)	MΩ
Safe overload	150	%R.C.
limited overload	200	%R.C.
Material	Aluminum	
Protection Class	IP65	
Cable length	2	m
Platform size	200*200	mm
Tightening torque	10	N•m

Wiring

Features:

Cable type: 4 separate conductor cable , conductor AWG 30
 Cable diameter:
 Cable length:
 Cable jacket: PVC

Mode of Connection



Type SPS-05 Load Cell

Dimensions in mm

