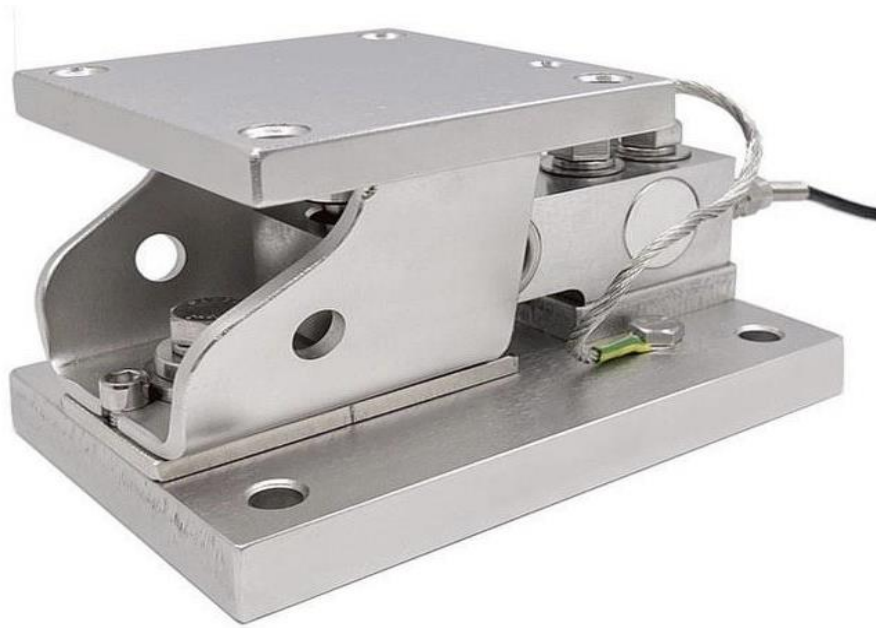


Type SSB-III Load Cell

Weighing modules



Features

- Weighing range: 100Kg...5t
- Use high-quality sensors with high weighing accuracy
- Unique structure, can be easily installed on various tanks
- Support bolts to prevent equipment from tipping over
- High-quality alloy steel, nickel-plated surface
- Simple and fast installation
- Easy maintenance, saving downtime maintenance time
- Protection grade IP67/IP68

Applications

- Hopper, silo
- Platform, vertical tank
- Ingredient weighing of tank
- Weighing control during production process

Weighing modules

Description

SSB-III static load weighing module uses high-quality sensor elements. Its characteristics are compact structure, no need to install other accessories, and the self-stabilizing sensor pressure head makes the measurement accurate and repeatable. Made of alloy steel, stainless steel is optional, suitable for weighing control of tank batching process in harsh environments. Quick installation, saving installation and downtime maintenance time. Static load weighing module can be easily installed on containers of various shapes, and can be easily loaded, batched or stirred in the container.

Weighing modules

Available Models

P/N	Capacity	Accuracy	Full Article Description
722089999-00010	100kg..300kg	C3	SSB-III-100kg-300kg-C3-12B-2-FHE
722089999-00011	500kg	C3	SSB-III-500kg-C3-12B-2-FHE
722089999-00012	1t	C3	SSB-III-1t-C3-12B-2-FHE
722089999-00013	2t	C3	SSB-III-2t-C3-12B-2-FHE
722089999-00014	3t	C3	SSB-III-3t-C3-12B-2-FHE
722089999-00015	5t	C3	SSB-III-5t-C3-12B-2-FHE

Type SSB-III Load Cell

Technical Specifications SSB-III

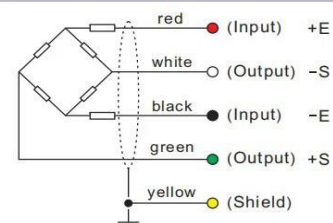
Accuracy Class		OIML R60 C3
Output Sensitivity (= FS)	mV/V	2.0 ± 0.002
Maximum Capacity (Emax)	kg	100kg...5t
Max. Number of Load Cell Intervals	nLc	3000
Ratio of min. LC Verification Interval	Y = Emax / vmin	7500
Combined Error	%FS	≤± 0.02
Creep Error (30 minutes)	%FS	≤± 0.02
Temperature Effect on Zero (ZTC)	%FS/10°C	≤± 0.02
Temperature Effect on Sensitivity (STC)	%FS/10°C	≤± 0.02
Zero Balance	%FS	≤± 1.5
Safe Overload	%FS	150
Ultimate Overload	%FS	300
Excitation, Recommended Voltage	V	5 ~ 12
Excitation, Maximum Voltage	V	18
Input Resistance	Ω	380 ± 20
Output Resistance	Ω	350 ± 3
Insulation Resistance (50V)	MΩ	≥5000
Compensated Temperature	°C	-10 ~ + 40
Operating Temperature	°C	-35 ~ + 65
Storage Temperature	°C	-40 ~ + 70
Load Cell Weight	kg	
Element Material		Alloy steel/ Stainless steel
Ingress Protection (acc. to EN 60529)		IP67/68
Recommended Torque on Fixation Bolts	Nm	1100
ATEX Classification (optional)		II 1G Ex ia IIC T4 Ga II 1D Ex ia IIIC T 200 135°C Da II 3G Ex ic IIC T4 Gc

Wiring

Features:

Cable type: Shielded, 4 conductor cable , conductor AWG 24
Cable diameter: Ø 5.5mm
Cable length: 5m (standard), 10m & 20m lengths also available
Cable jacket: PVC
Shield not connected to element

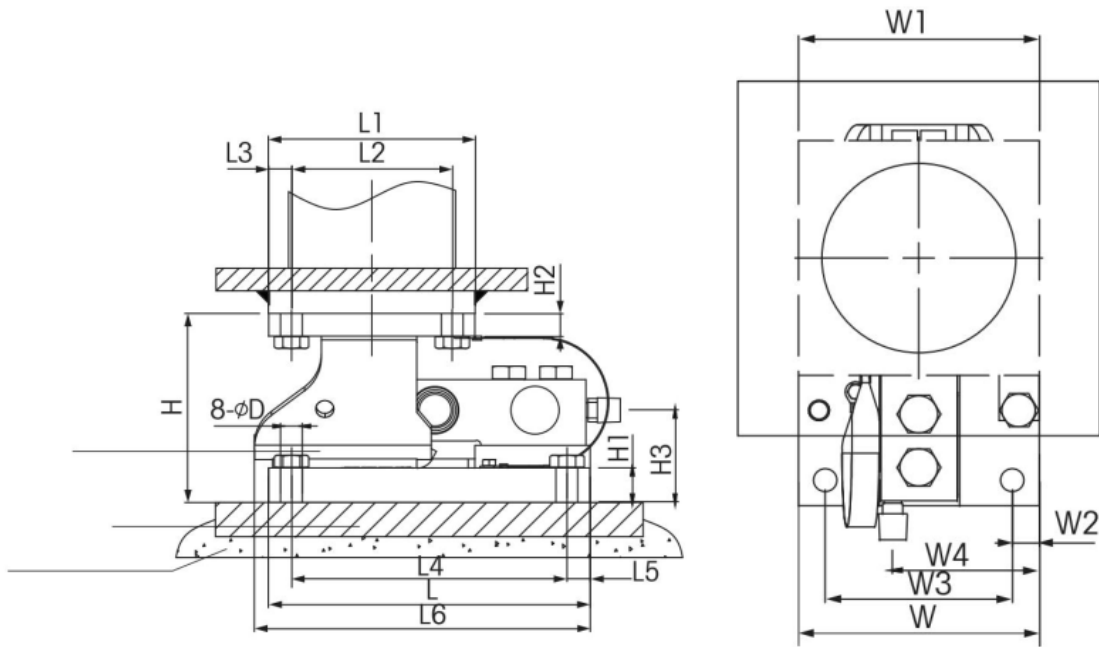
Mode of Connection



Type SSB-III Load Cell

Dimensions in mm

Product Size Fig	
Unit:	mm



Range	D	H	H1	H2	H3	H4	L	L1	L2	L3	L4	L5	L6	W	W1	W2	W3	W4	A
0-100kg	10	83	12.7	8	41.0	10	165	102	82	10	145	10	-	102	102	10	82	60.0	M8
300kg/500kg/1T	11.2	105.2	19.1	12.7	50.9	15	177.9	114.4	89.0	12.7	152.4	12.7	185.6	114.4	114.4	12.7	89.0	66.6	M10
3T	11.2				51.3													69.7	
5T	17.5	136.6	25.4	19.1	70.3	20	235.0	152.4	101.6	25.4	184.2	25.4	-	152.4	152.4	25.4	101.6	91.7	M16