



Type SSB-III Load Cell



Short Description

- Nickel plated alloy steel IP67 shear beam load cell
- Adhesive sealed
- Suitable platform weighing, bed weighing, etc.
- High accuracy
- High reliability
- Current calibrated (sc-option)



 Test certificate no. TC7868 Revision 1
 C of C no R60/2000-NL1-12.52
 Certificate no. 06-199A1

Available Models

P/N	Capacity	Accuracy	Full Article Description
72208400	500kg	C3	SSB-III-C3-500kg-4B
72208401	1t	C3	SSB-III-C3-1t-4B
72208402	2t	C3	SSB-III-C3-2t-4B
72208403	3t	C3	SSB-III-C3-3t-4B

Type SSB-III Load Cell

Technical Specifications SSB-III

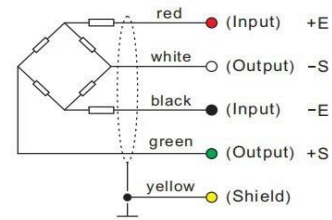
Accuracy Class		OIML R60 C3
Output Sensitivity (= FS)	mV/V	2.0 ± 0.2
Maximum Capacity (Emax)	kg	500kg,1t,,2t,,3t
Max. Number of Load Cell Intervals	n/c	3000
Ratio of min. LC Verification Interval	$Y = E_{max} / v_{min}$	10000
Combined Error	%FS	≤± 0.020
Minimum dead load	Of Emax	0%
Safe overload	of Emax	150 %
Ultimate overload	of Emax	300 %
Zero balance	of FS	< ± 2.0 %
Excitation, recommended voltage	V	5 ~ 12
Excitation maximum	V	18
Input resistance	Ω	385 ± 20
Output resistance	Ω	350 ± 3.5
Insulation resistance	MΩ	≥5000 (at 50VDC)
Compensated temperature	°C	-10 ~ +40
Operating temperature	°C	-35 ~ +65
Storage temperature	°C	-40 ~ +80
Element material		Nickel plated alloy steel
Ingress Protection (acc. to EN 60529)		IP67
Recommended torque on fixation bolts	Nm	
ATEX classification (optional)		II1G Ex ia II1C T4 II1D Ex iaD 20 T73°C II3G nL IIC T4

Wiring

Features:

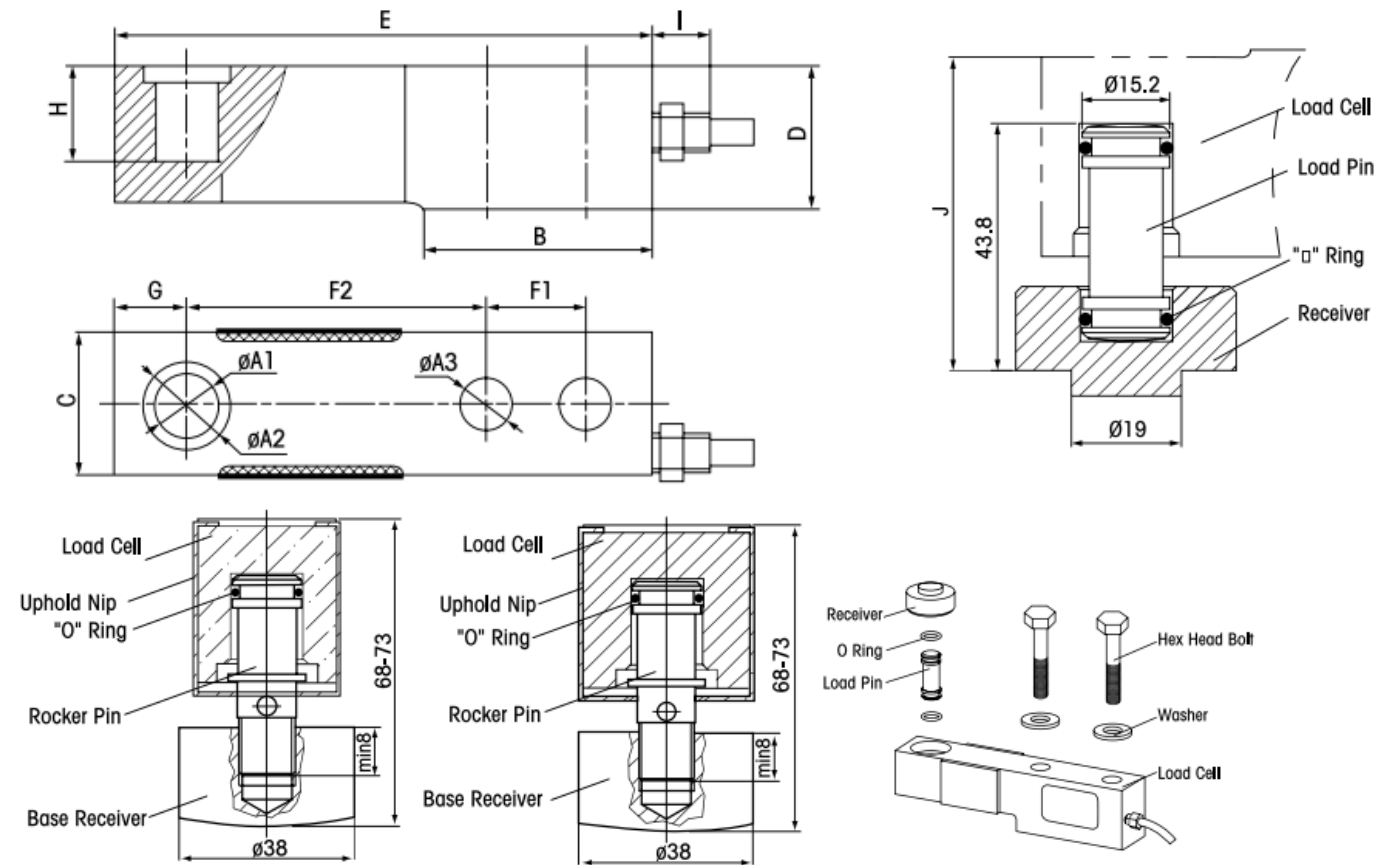
Shielded, 4 conductor cable.
Cable diameter: Ø5.3mm.
Standard cable length for 500kg – 3t 5m
Shield connected to element.
Cable jacket in PVC.

Mode of Connection



Type SSB-III Load Cell

Dimensions in mm



Capacity	$\phi A1$	$\phi A2$	$\phi A3$	B	C	D	E	F1	F2	G	H	I	J
500kg	16	22	12.5	57.8	30.2	35	133.4	25.4	76.2	15.4	22	17	55.3
1000kg	16	22	12.5	58.2	36.6	36.6	137	25.4	76.2	18.4	23.7	17	54.6
2000kg	16	22	12.5	58.2	36.6	36.6	137	25.4	76.2	18.4	23	17	55.3
3000kg	16	22	14.7	58.2	36.6	36.6	137	25.4	76.2	18.4	23	17	55.3

Type SSB-III Load Cell

Available accessories

SPC -201- foot

- Nickel plated alloy steel
- Adjustable height

