

Type SSB-V Load Cell



Short Description



- **Stainless steel** IP68 shear beam load cell
- Adhesive sealed
- Suitable platform weighing, bed weighing, etc.
- High accuracy
- High reliability
- Current calibrated (sc-option)



Test certificate no. TC7868 Revision 1
C of C no R60/2000-NL1-12.52



Certificate no. 06-199-2A1

Available Models

P/N	Capacity	Accuracy	Full Article Description
722082715-01	50kg	C3	SSB-V-C3-50kg-4B
722082715-02	100kg	C3	SSB-V-C3-100kg-4B
722082715-0	200kg	C3	SSB-V-C3-200kg-4B
722082715-1	250kg	C3	SSB-V-C3-250kg-4B
722082715-2	300kg	C3	SSB-V-C3-300kg-4B
722082715-3	500kg	C3	SSB-V-C3-500kg-4B
722082715-4	1t	C3	SSB-V -C3-1t-4B
722082715-5	2t	C3	SSB-V -C3-2t-4B
722082715-6	3t	C3	SSB-V -C3-3t-4B
722082715-7	5t	C3	SSB-V -C3-5t-4B
722082715-8	10t	C3	SSB-V -C3-10t-4B

Type SSB-V Load Cell

Technical Specifications SSB-V

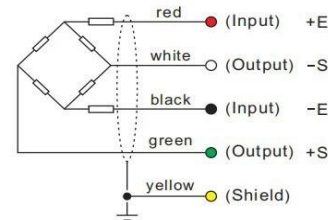
Accuracy Class		OIML R60 C3
Output Sensitivity (= FS)	mV/V	2.0 ± 0.2
Maximum Capacity (Emax)	kg	50kg,100kg,200kg,250kg,300kg,500kg,1t,2t,3t,5t,10t
Max. Number of Load Cell Intervals	n/c	3000
Ratio of min. LC Verification Interval	Y = Emax / vmin	10000
Combined Error	%FS	≤± 0.020
Minimum dead load	Of Emax	0%
Safe overload	of Emax	150 %
Ultimate overload	of Emax	300 %
Zero balance	of FS	< ± 2.0 %
Excitation, recommended voltage	V	5 ~ 12
Excitation maximum	V	18
Input resistance	Ω	381 ± 20
Output resistance	Ω	350 ± 3.5
Insulation resistance	MΩ	≥5000 (at 50VDC)
Compensated temperature	°C	-10 ~+40
Operating temperature	°C	-35 ~ +65
Storage temperature	°C	-40 ~ +80
Element material		Stainless steel
Ingress Protection (acc. to EN 60529)		IP68
Recommended torque on fixation bolts	Nm	
ATEX classification (optional)		II1G Ex ia II1C T4 II1D Ex iaD 20 T73°C II3G nL IIC T4

Wiring

Features:

- Shielded, 4 conductor cable.
- Cable diameter: Ø5.3mm.
- Standard cable length for 250kg – 5t 5m,10t 12m
- Shield connected to element.
- Cable jacket in PVC.

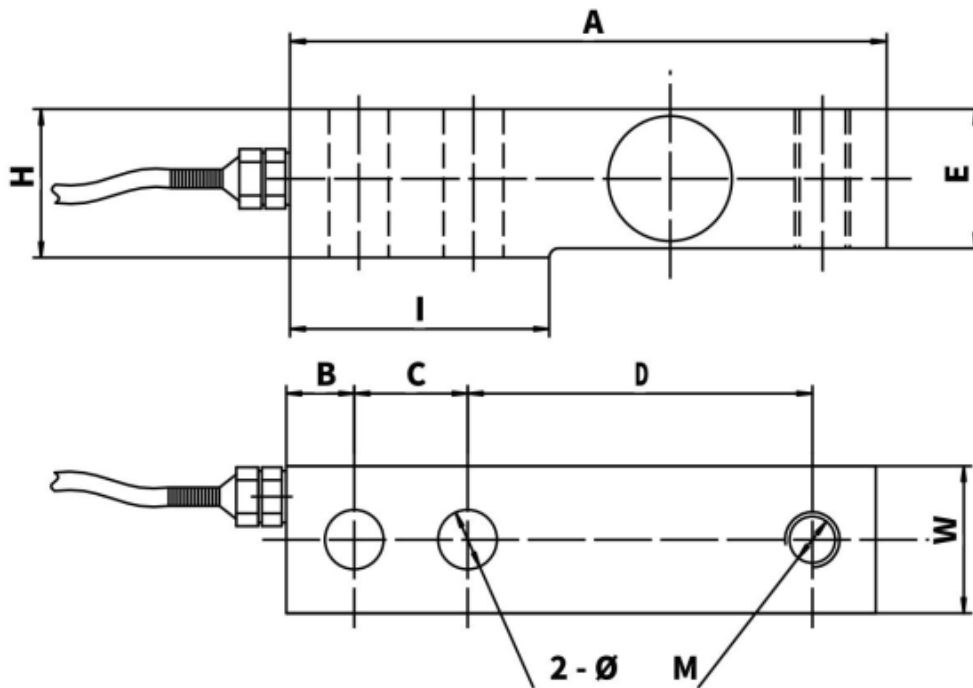
Mode of Connection



Type SSB-V Load Cell

Dimensions in mm

Product Size Fig	
Unit:	mm



Range	A	B	C	D	E	W	H	M	2-φ	I
50kg-2T	130	15	25	76	30	32	32	M12*1.75	φ 13	56
2.5-5T	171	19	38	96	38	38	43	M18*1.5	Φ 20	80
6-10T	225.6	25.4	50.8	122.9	50.8	50.8	56	M24*2	Φ 26.4	105

Type SSB-V Load Cell

Available accessories

SPC -304-0.25->2t foot

SPC -304-3T->10t foot

- Stainless steel
- Adjustable height

