


## Type STK Load Cell



### Short Description



- Aluminum alloy material, anodized surface IP67 “S” type load cell  Test certificate no. TC7868 Revision 1
- Tension and compression applications
- Suitable for hanging, hopper and other weighing Devices
- Also available in imperial capacities and dimensions

C of C no R60/2000-NL1-12.52

Certificate no. 06-099A1

### Available Models

P/N	Capacity	Accuracy	Full Article Description
72209200	10kg	C3 Excluded from OIML	STK-10-C3-10kg-3B
72209201	20kg	C3 Excluded from OIML	STK-20-C3-20kg-3B
72209202	50kg	C3 Excluded from OIML	STK-50-C3-50kg-3B
72209203	80kg	C3 Excluded from OIML	STK-80-C3-80kg-3B
72209204	100kg	C3 Excluded from OIML	STK-100-C3-100kg-3B
72209205	200kg	C3 Excluded from OIML	STK-200-C3-200kg-3B
72209206	300kg	C3 Excluded from OIML	STK-300-C3-300kg-3B
72209207	500kg	C3 Excluded from OIML	STK-500-C3-500kg-3B

## Type STK Load Cell

### Technical Specifications STK

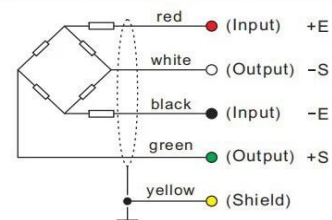
Accuracy Class		OIML R60 C3	OIML R60 C4	C3
Output Sensitivity ( = FS )	mV/V	2.0 ± 0.2		
Maximum Capacity ( Emax )	kg	10,20,50,80,100,200,300,500		
Max. Number of Load Cell Intervals	nLC	3000	4000	3000
Ratio of min. LC Verification Interval	Y = Emax / vmin	10000	15000	10000
Combined Error	%FS	≤± 0.020	≤± 0.018	≤± 0.020
Minimum dead load	Of Emax	0%		
Safe overload	of Emax	150 %		
Ultimate overload	of Emax	300 %		
Zero balance	of FS	< ± 2.0 %		
Excitation, recommended voltage	V	5 ~ 12		
Excitation maximum	V	18		
Input resistance	Ω	385 ± 20		
Output resistance	Ω	350 ± 3.5		
Insulation resistance	MΩ	≥5000 ( at 50VDC )		
Compensated temperature	°C	-10 ~ +40		
Operating temperature	°C	-35 ~ +65		
Storage temperature	°C	-40 ~ +70		
Element material		Aluminum alloy material		
Ingress Protection (acc. to EN 60529)		IP67		
Recommended torque on fixation bolts	Nm	M6,M8:25 M10: 50 M12:75 M20:450 M33:750 M42:1450		
ATEX classification (optional)		II1G Ex ia II1C T4 II1D Ex iaD 20 T73°C II3G nL IIC T4		

### Wiring

#### Features:

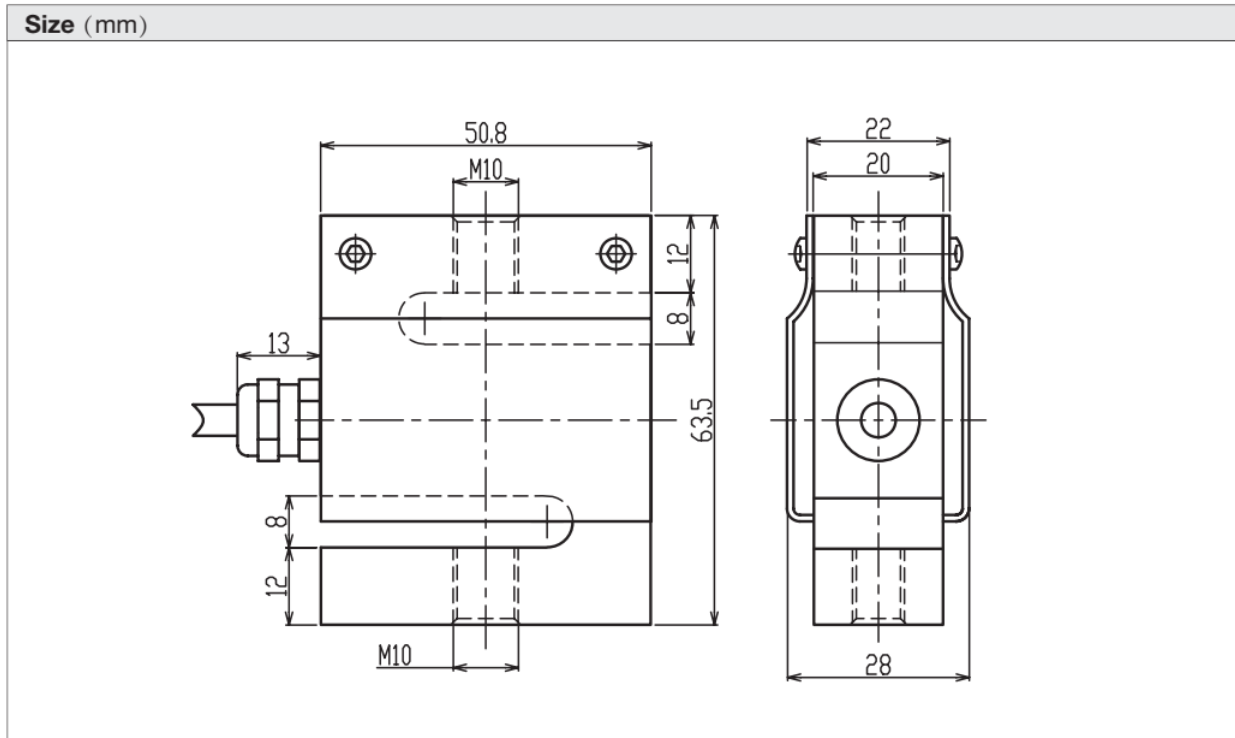
Shielded, 4 conductor cable.  
Cable diameter: Ø5.3mm.  
Standard cable length for 10kg – 500kg: 3m  
Shield connected to element.  
Cable jacket in PVC.

#### Mode of Connection



## Type STK Load Cell

Dimensions in mm



CAPACITY (kg)	L	H	W	W1	M
10-100	51	64	20	28	M10
200-500	64	82	23		M12

